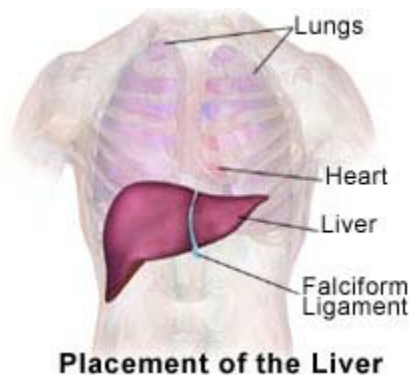


Interventional Radiology

Image Guided Liver Biopsy

What is a Liver Biopsy? An Imaged Guided Liver Biopsy is performed in Radiology by an Interventional Radiologist using an Ultra sound machine. A needle is inserted through the skin into the liver and small tissue samples are then sent to the laboratory.



Why is a liver biopsy performed? Liver biopsies are done to diagnose certain liver diseases, chronic hepatitis B or C, biliary cirrhosis, and cancer. The results obtained from the biopsy help your physician plan the right treatment.

What is a Liver Biopsy like? You will be instructed to arrive one hour early to prepare for the procedure. You will change into a hospital gown in the admitting area. Your medications, vital signs and health history will be reviewed by the nurse. You will then have an IV placed. The Interventional Radiologist will meet with you to explain the procedure before you sign the consent.

You will be escorted to the Radiology suite and assisted up on the table. EKG, blood pressure and oxygen monitoring equipment will be attached to your body and IV fluids will be started. The biopsy site will be washed off and a sterile drape placed over your body.

The Physician will use a numbing medication around the biopsy site and the nurse will give relaxing medications through your IV. When you are relaxed the procedure will begin.

What to expect after the Liver Biopsy. Following the procedure you will be taken to the recovery area and monitored for bleeding, pain and nausea. In some cases a blood draw will be done. Your total recovery time is 3 to 4 hours. Please remember to have a responsible adult to drive you home. Expect a follow up call from the clinic nurse within 48 hours. You will be notified of the results of your biopsy by your referring physician within 3 to 5 business days.

Questions? Call Interventional Radiology Clinic 206 -341-0152.