



# Community Health Improvement Grants

# Reflection

A young woman with dark hair, wearing a green tank top and purple pants, is sitting and smiling warmly. An elderly woman with short, grey hair, wearing a blue and white floral patterned shirt, is sitting next to her, leaning her head against the younger woman's and smiling back. They are both looking towards each other in a moment of connection. The background is a blurred outdoor setting with a wooden fence.

*“Individually, we are  
one drop. Together,  
we are an ocean*

*Ryunosuke Satoro*



# Welcome!



# VMFH & CommonSpirit Health

## Our mission

As CommonSpirit Health, we make the healing presence of God known in our world by improving the health of the people we serve, especially those who are vulnerable, while we advance social justice for all.

## Our vision

A healthier future for all – inspired by faith, driven by innovation, and powered by our humanity.

## Our values






Compassion | Inclusion | Integrity | Excellence | Collaboration








# Community Health Improvement Grants

## What:

Hospitals will annually **grant funds to programs and services** delivered by **collaborating, non-profit organizations** to address one or more **significant health needs** in their most recent **community health needs assessments** and **implementation strategies**.

# Patient Care Sites in Washington

-  Hospitals
-  Outpatient Centers
-  Urgent & Prompt Care Clinics
-  Franciscan Hospice House,  
Bailey-Bouchay House
-  Benaroya Research Institute

-  Hospitals: 9
-  Bed Count: 1,605
-  Outpatient Centers: 211
-  Urgent & Prompt Care Clinics: 12
-  Franciscan Hospice House: 1
-  Bailey-Bouchay House: 1
-  Benaroya Research Institute: 1



# Community Health Needs Assessments

## Data Driven

Use the most up-to-date information to drive decision making. CHNAs include up to 65 or more health indicators across a range of categories

## Community Engagement

Community engagement is built into the process to ensure the voice of the community and those with lived experience is included.

## Priority Health Areas

Data and engagement are combined to identify areas where health systems should focus their time and investments.

# VMFH Priority Health Areas

## Access to Care

- Insurance Coverage
- *Maternal/Child Health*
- *Basic Needs*
- Language Access

## Behavioral Health

- Substance Use
- Youth Anxiety
- Access to Treatment

## Chronic Disease

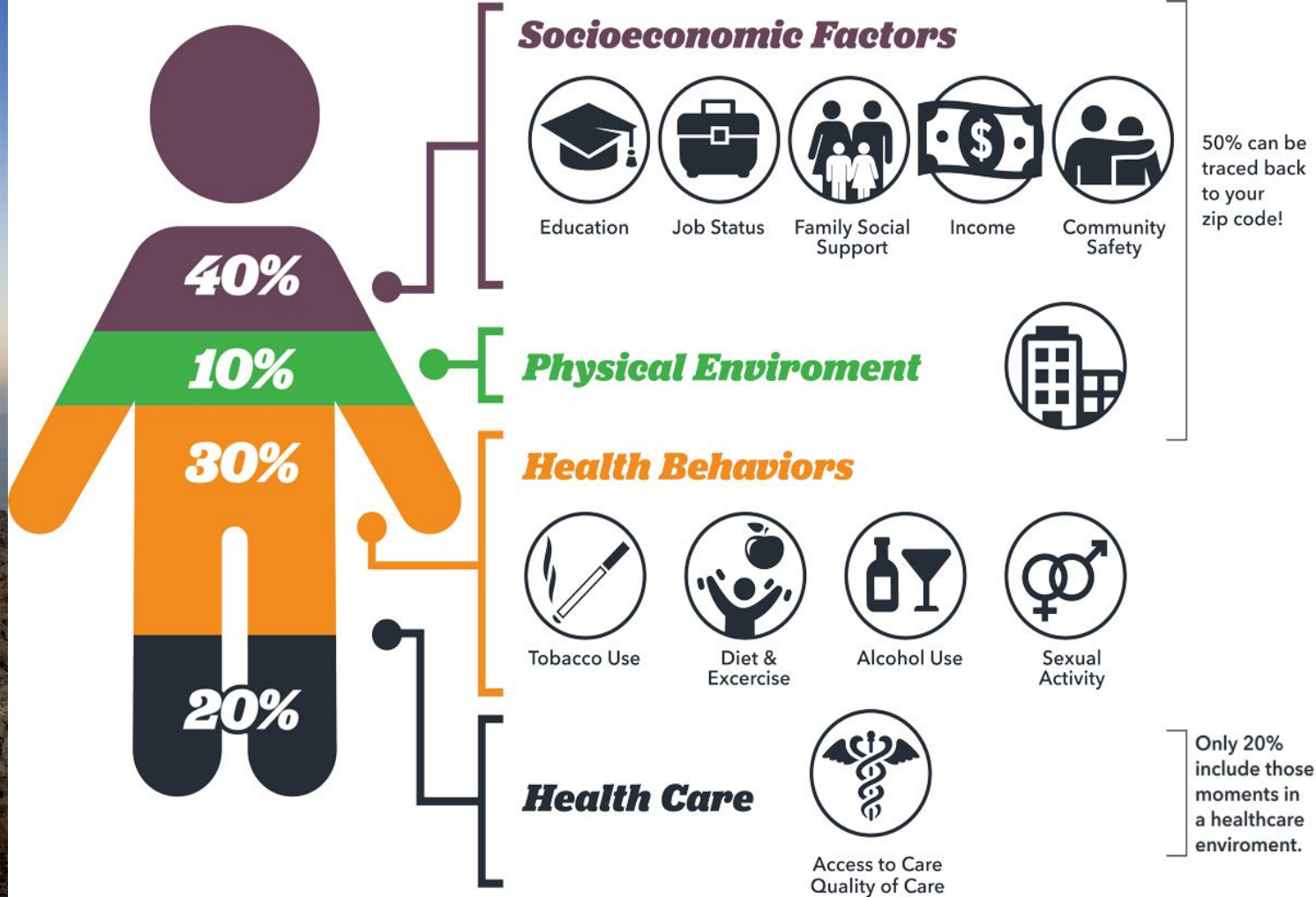
- Hypertension
- Diabetes
- Healthy Food
- Screening

## Violence Prevention

- Youth/Gun Violence
- DV/Sexual Assault
- Suicide



# Social Drivers of Health





# Spectrum of Prevention

## Spectrum of Prevention

Influencing **Policy & Legislation**

Changing **Organizational Practices**

Fostering **Coalitions & Networks**

Educating **Providers**

Promoting **Community Education**

Strengthening **Individual Knowledge & Skills**

<https://www.preventioninstitute.org/tools/spectrum-prevention-0>

# Grant Eligibility and Timeline

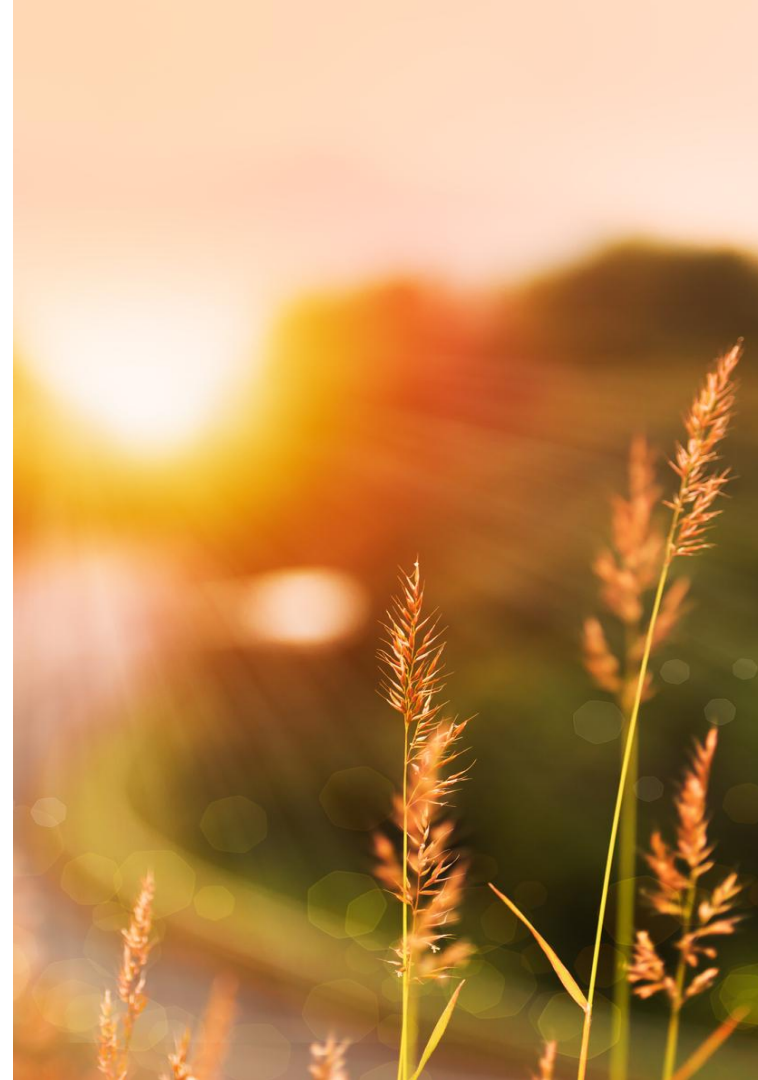


# Timeline

- July 17, 2023 – Application period opens
- Sept. 8, 2023 – Application period closes
- Nov. 15, 2023 – Applicants are notified of funding decisions
- Dec. 15, 2023 – Approved applicants sign grant agreements and receive funding
- Jan. 1, 2024 – 12-month project year begins
- Dec. 31, 2024 – Project year ends

# Eligibility & Criteria

- Lead applicant must be a 501(c)(3) nonprofit organization
- Grant projects awards are from \$20,000 up to \$100,000.
- Grant project implementation is from January to December 2024.
- Address one or more prioritized significant needs from a VMFH Community Health Needs Assessment
- Serve identified vulnerable or underserved populations
- Include two or more collaborating partners with distinct, complementary and substantive project roles





# Ineligible Projects

- Ineligible proposals include those for unrestricted general operating support, event sponsorships and activities less than 9 months in duration.
- The grant program does not fund capital projects, lobbying or political campaigns.
- The grant program does not fund indirect costs.

# Applying for a Grant



# CommonSpirit Health Grants Portal

[www.vmfh.org/community-grants](http://www.vmfh.org/community-grants)

[www.commonspirit.org/community-grants](http://www.commonspirit.org/community-grants)

- Includes additional information
- AmpliFund grants portal
- FAQ Documents
- Only enter portal for grants over \$20,000



# AmpliFund Grants Management

- Requires new users to register
- Allows users to save and come back to applications
- Allows for collaboration on grant requests
- Will be the same system for mid-year and year-end reports
- Apply for “Virginia Mason Franciscan Health”

# Grant Application Questions / Requirements

## Applicant Organization

- Address, email, website
- Mission & principal activities
- Fiscal agent (if any)
- IRS 501(c)3 Determination Letter w/ Tax ID
- IRS Form W-9 current address
- Board of Directors list

## Partner Organizations

- Website
- Mission & principal activities
- Contact information
- Partners should have distinct, complementary and substantive project roles

# Grant Application Questions / Requirements

## Needs Addressed, Project Summary and Population Served

- CHNA needs addressed
- Concise summary description of the proposed project
- Populations to be served
- Project sustainability
- *Any hospital role in the project?*
- *Protected Health Information of CommonSpirit patients?*

# Grant Application Questions / Requirements

## Performance Plan

- Adds detail to the project summary, itemizing the main activities/services by applicant and partner organizations
- **Project Activities**, with narrative descriptions and numerical persons-served goals
- **Project Outcomes Goals**, with narrative and numerical input

## Budget

- Personnel
- Contract Purchased Service
- Supplies
- Equipment
- Travel - Local Mileage
- Sub-Award (partners)
- Miscellaneous

# VMFH Grant Approval Process

- VMFH will convene a grants committee in September
  - Will include representatives from all 8 participating hospitals and community members
- Considerations for funding
  - Geographic representation
  - Unique partnerships
  - Trust in community
  - Projects in all CHNA priority areas
  - SDOH/Spectrum of Prevention

# Questions