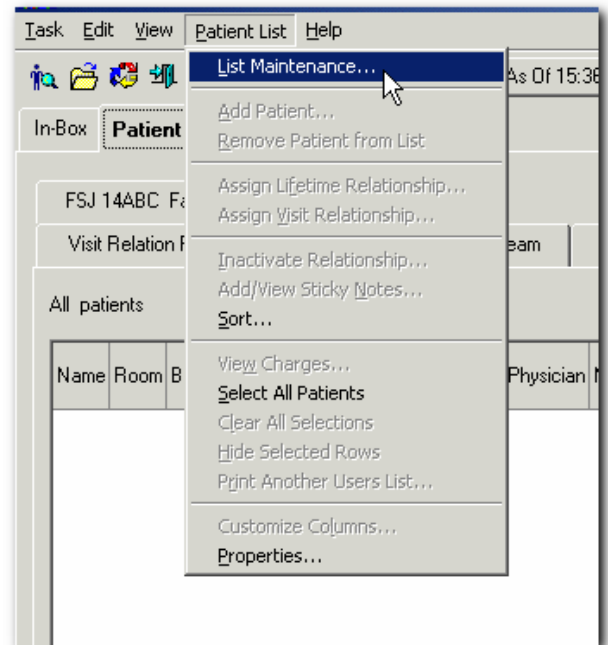
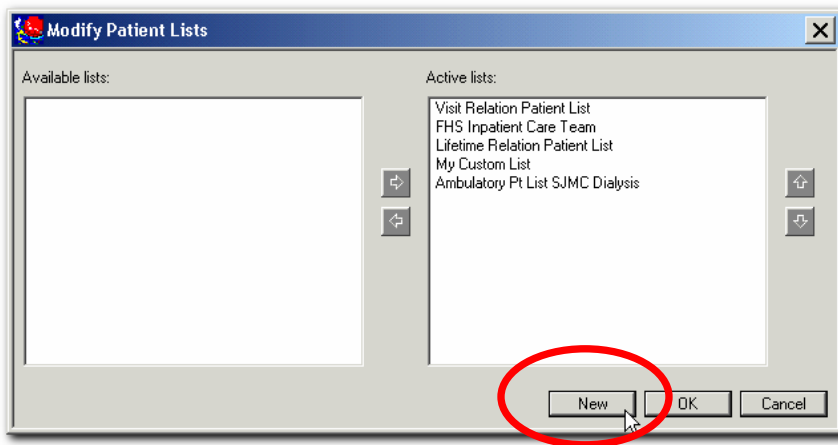


ACIS: Creating a Custom Patient List

To easily access charts for patients you are rounding on, create a custom patient list and select the patients you would like to populate the list:

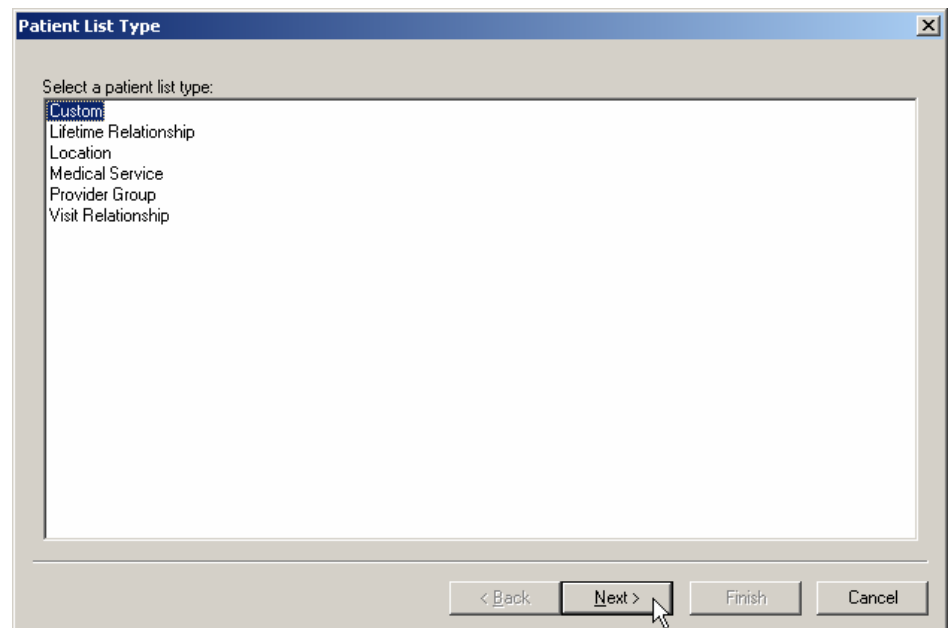
1. Log into ACIS, and click on the **Patient List** tab in PowerChart.
2. From the **Patient List** menu, select **“List Maintenance”**. This displays the **“Modify Patient Lists”** dialog box.



3. Click the **New** button at the bottom of the **Modify Patient Lists** dialog box. This will display the **Patient List Type** dialog box. Click **Custom** on the Patient Type list, and click the **Next** button.

This will display the **“Custom Patient List”** dialog box.

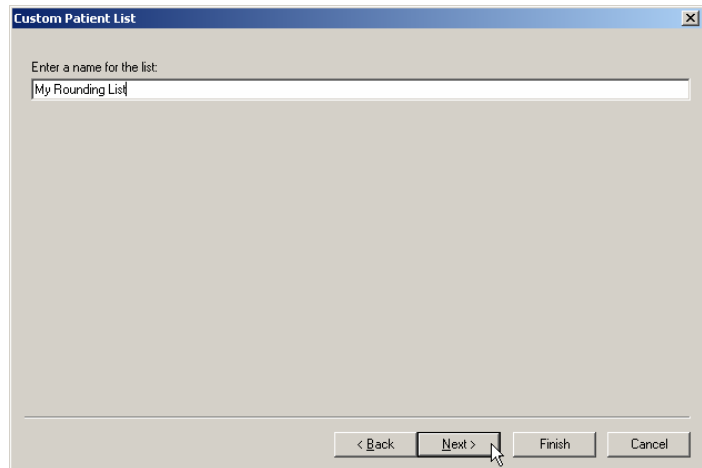
(See next page.)



Creating a Custom Patient List

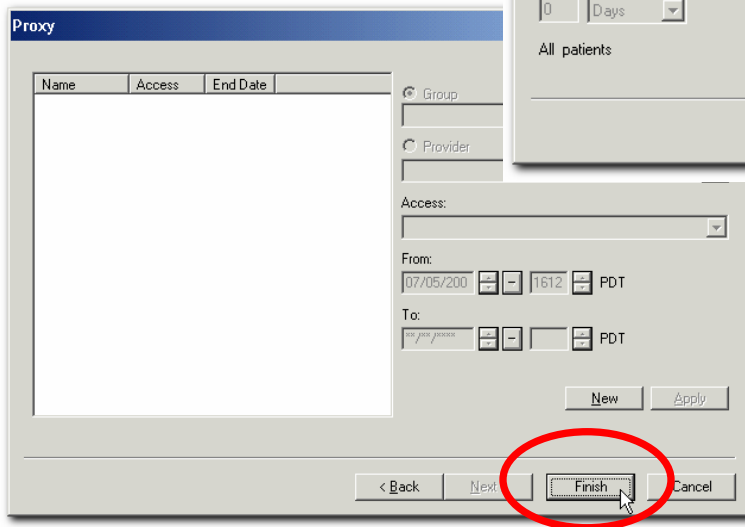
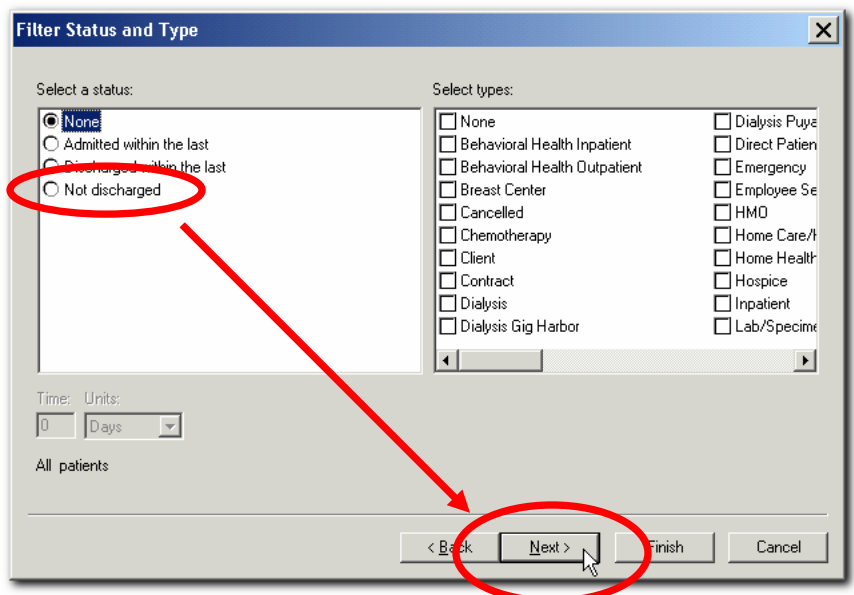
4. In the **Custom Patient List** dialog box, type in a name for your list and click the **Next** button.

This will display the “**Filter Status and Type**” dialog box.



5. To have patients automatically drop off your list once they are discharged, click on the **Not Discharged** radio button and then click the **Next** button.

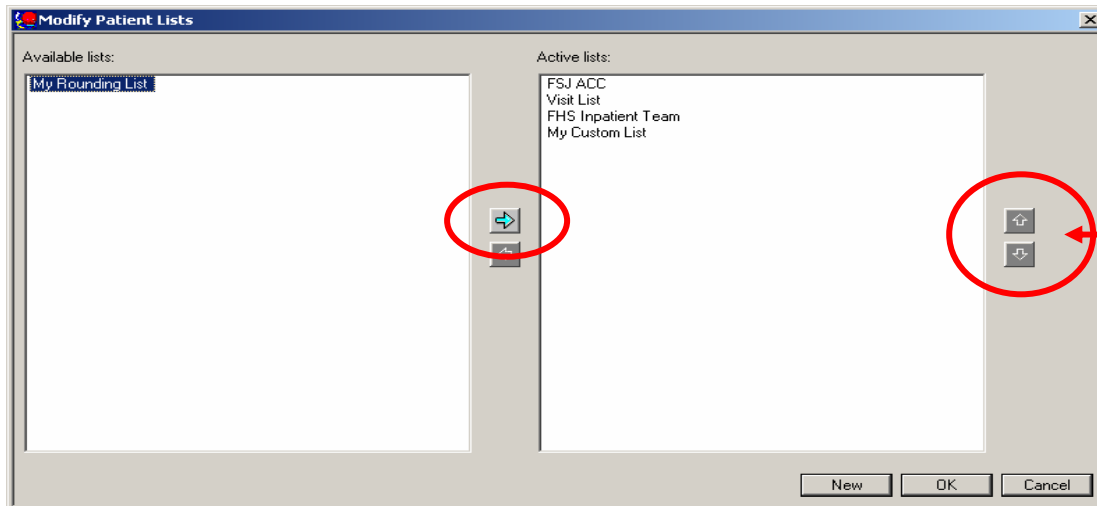
This will display the **Proxy** dialog box. You will not make any changes in the Proxy dialog box, so click the “**Finish**” button.



Creating a Custom Patient List

- This brings you back to the “**Modify Patient Lists**” dialog box, where you will see your custom list in the **Available lists** section on the left.

Single click to select your new custom list then click the **blue right-arrow** button between the two panels. This will transfer your custom list over to the **Active lists** section on the right.



TIP: Use the arrows on the right hand side to change the order of your lists.

- Click the **OK** button. This will close the **Modify Patient Lists** dialog box, and you should now see your newly-added custom patient list as a new tab in your Patient Lists.

